

Clay County  
Middle School

Five-Day  
Snow Packet



---

## CLAY COUNTY MIDDLE SCHOOL

---

***“Student success in learning is the goal of all school activity.”***

Dear Student,

Attached is your Reimagining Time Learning (Snow Day) Packet for this school year. When we are not in school, you are expected to complete the packet for that day to recover the instructional time lost. You have ten instructional days to complete your snow day assignment. Please note that the lessons for all five days are included, so protect this packet and the accompanying magazines. If you do not have your magazine, please go to <http://classroommagazines.scholastic.com/Landing-Pages/subscribers> and click on the magazine you need. You can use the issue that is on free preview or log in using our school password.

**Mathematics** – Please complete the lesson for the day. You can check with a calculator after you have attempted the task on your own. You will share this assignment with your mathematics teacher.

**English** – Using your sustained silent reading book, please complete the attached reading log and choose the appropriate task depending on whether you are reading a fiction book or a nonfiction book. If you finish your book, or for some reason do not have a book available, please follow the directions at the bottom of the English assignment or use *Scope* magazine online. You will share this assignment with your English teacher.

**Science and Social Studies** – Regardless of which class you have, using the *Science World* and *Junior Scholastic* magazines provided to you, please read and complete the 3-2-1 activities for at least one article from each magazine for each day. You will share these assignments with your science or social studies teacher depending on which teacher you have now.

**Art/Music** – Please complete both assignments. You will share these assignments with your art and music teachers.

**Wellness** – Please complete your warm-up exercises and record your physical activity each day. Your activity log can be found at the end of the packet. You will share this assignment with your wellness teacher.

If you need assistance, you may contact your teacher through LiveGrades at <http://www.livegrades.com> or call the school at (304) 587-2343. We look forward to seeing you soon.

Take care,  
CCMS Staff

Name: \_\_\_\_\_ Date: \_\_\_\_\_ Block: \_\_\_\_\_

### Day One Mathematics 6 - 8 Snow Day Packet

Day One - Your first job is a minimum wage job in West Virginia.

According to the United States Department of Labor, minimum wage in West Virginia is \$8.75 per hour. Your gross pay is the money you earn before any deductions.

1. If you work eight hours a day, how much money will you gross daily? \_\_\_\_\_
2. If you work 40 hours each week, how much money will you gross weekly? \_\_\_\_\_
3. If you work four weeks each month, how much money will you gross monthly? \_\_\_\_\_
4. If you work fifty-two weeks each year, what will be your annual gross? \_\_\_\_\_

When you look at your pay check you realize that you did not make as much money as you thought you did. You discover that your employer is required by law to withhold some mandatory payroll deductions from your paycheck.

Your employer is required to withhold federal income tax at the rate noted below.

5. How much federal income tax (0%) will your employer withhold each day? \_\_\_\_\_
6. How much federal income tax (0.48%) will your employer withhold each week? \_\_\_\_\_
7. How much federal income tax (5.24%) will your employer withhold each month? \_\_\_\_\_
8. How much federal income tax (5.24%) will your employer withhold each year? \_\_\_\_\_

Your employer is required to withhold state income tax at the rate noted below.

9. How much state income tax will (0%) your employer withhold each day? \_\_\_\_\_
10. How much state income tax will (2.28%) your employer withhold each week? \_\_\_\_\_
11. How much state income tax will (2.93%) your employer withhold each month? \_\_\_\_\_
12. How much state income tax will (2.93%) your employer withhold each year? \_\_\_\_\_

In Clay we do not have local income tax, so your employer does not withhold any local taxes.

The Federal Income Contributions Act (FICA) is a tax to fund Social Security and Medicare.

Your employer is required to withhold FICA tax at a rate of 7.65%.

13. How much FICA tax will your employer withhold each day? \_\_\_\_\_
14. How much FICA tax will your employer withhold each week? \_\_\_\_\_
15. How much FICA tax will your employer withhold each month? \_\_\_\_\_
16. How much FICA tax will your employer withhold each year? \_\_\_\_\_

17. Let's calculate your net income for each month by using your responses to the previous questions.

$$\underline{\hspace{2cm}} \text{ #3 } \text{ minus } \underline{\hspace{2cm}} \text{ #7 } \text{ minus } \underline{\hspace{2cm}} \text{ #11 } \text{ minus } \underline{\hspace{2cm}} \text{ #15 } = \underline{\hspace{2cm}} \text{ equals your monthly net income.}$$

Name: \_\_\_\_\_ Date: \_\_\_\_\_ Block: \_\_\_\_\_

**Day One Mathematics 6 - 8 Snow Day Packet**

After working a month, you receive your first paycheck. Your net income is \$1,293.00.

You understand the importance of saving for unexpected expenses.  
Financial advisors suggest you save 20% of your income each month.  
How much will you save each month? \_\_\_\_\_

You have fixed expenses that remain the same each month.  
Financial advisors suggest 50% of your income will be allocated to these expenses.  
What is 50% of your net income each month? \_\_\_\_\_  
How much will you budget for each of the following?

- Housing \_\_\_\_\_
- Electricity and Gas for your House \_\_\_\_\_
- Water/Sewage/Trash \_\_\_\_\_
- Property Taxes \_\_\_\_\_
- Transportation \_\_\_\_\_
- Fuel for a Car \_\_\_\_\_
- Car Insurance \_\_\_\_\_

You have expenses that vary from month to month.  
Financial advisors suggest 30% of your income will be allocated to these expenses.  
What is 30% of your net income each month? \_\_\_\_\_  
How much will you budget for each of the following?

- Food \_\_\_\_\_
- Clothing \_\_\_\_\_
- Entertainment \_\_\_\_\_
- Connectivity \_\_\_\_\_

Discuss with your family other expenses they encounter each month.

Discuss with your family how realistic the amount you budgeted for each item is.

Write a paragraph sharing what you learned from this experience.

---

---

---

---

---

---

---

---

Name: \_\_\_\_\_ Date: \_\_\_\_\_ Block: \_\_\_\_\_

**Day One English 6 - 8 Snow Day Packet**

Students read their pleasure reading book for at least sixty minutes and complete their reading log.

Date	Start Page	Stop Page	Total Pages	Plot or Topic Summary Today, I read about ... I am at the part where ... Describe one thing that happened.

Students complete the assignment below for a fiction book.

Title:

\_\_\_\_\_

Author:

\_\_\_\_\_

Characters:

\_\_\_\_\_

Protagonist:

\_\_\_\_\_

Antagonist:

\_\_\_\_\_

Setting:

\_\_\_\_\_

Clues to Setting:

\_\_\_\_\_

Point of View:

\_\_\_\_\_

One sentence that demonstrates point of view:

\_\_\_\_\_

Unknown Word in a Sentence:

\_\_\_\_\_

Definition of Unknown Word:

\_\_\_\_\_

In the event you finish your book, do not have a book to read, or do not choose to read for sixty minutes, choose one of the following options **and** one of the writing options:

Design a book cover.

Create a word cloud.

Prepare a Book Talk.

Writing Options:

Write the sequel to the narrative you were reading.

Write an informative composition that would enhance one's understanding of the book you were reading.

Write an argumentative composition that would argue whether the book you were reading should be made into a movie.

Name: \_\_\_\_\_ Date: \_\_\_\_\_ Block: \_\_\_\_\_

**Day One English 6 - 8 Snow Day Packet**

Students complete the assignment below for a non-fiction book.

Title of Book:	
Page(s) read: _____	
Date read: _____	
<b>3</b>	Things I learned: •  •  •
<b>2</b>	Things I Found Interesting: •  •
<b>1</b>	Question I Still Have: •

★ Rating: ★ ★ ★ ★ ★

In the event you finish your book, do not have a book to read, or do not choose to read for sixty minutes, choose one of the following options **and** one of the writing options:

Design a book cover.

Create a word cloud.

Prepare a Book Talk.

Writing Options:

Write the sequel to the narrative you were reading.

Write an informative composition that would enhance one's understanding of the book you were reading.

Write an argumentative composition that would argue whether the book you were reading should be made into a movie.

Name: \_\_\_\_\_ Date: \_\_\_\_\_ Block: \_\_\_\_\_

**Day One Science 6 - 8 Snow Day Packet**

For each snow day, choose ONE article from *Science World* to read. Upon completion of the article, complete the attached 3, 2, 1 to show understanding.

Title of Article:	
Page(s) read: _____	
Date read: _____	
<b>3</b>	Things I learned: <ul style="list-style-type: none"><li>•</li><li>•</li><li>•</li></ul>
<b>2</b>	Things I Found Interesting: <ul style="list-style-type: none"><li>•</li><li>•</li></ul>
<b>1</b>	Question I Still Have: <ul style="list-style-type: none"><li>•</li></ul>

★ Rating: ★★☆☆☆

If you do not have your *Science World*, please complete the 3-2-1 using a topic being presented in class that you researched today or formulate an investigative question, such as, "When will we return to school?" Provide research and background information that will help you respond to your investigative question. State your hypotheses. Discuss the variables related to your investigative question. Present evidence to support or refute your hypotheses. Share why your hypotheses was supported or refuted and ideas for future investigative questions related to this inquiry.

Name: \_\_\_\_\_ Date: \_\_\_\_\_ Block: \_\_\_\_\_

**Day One Social Studies 6 - 8 Snow Day Packet**

For each snow day, choose ONE article from *Junior Scholastic* to read. Upon completion of the article, complete the attached 3, 2, 1 to show understanding.

Title of Article: _____	
Page(s) read: _____	
Date read: _____	
<b>3</b>	Things I learned: •  •  •
<b>2</b>	Things I Found Interesting: •  •
<b>1</b>	Question I Still Have: •

★ Rating: ★ ★ ★ ★ ★

If you do not have your *Junior Scholastic*, please complete the 3-2-1 using a topic being presented in class that you researched today or write a news story on a current event you investigated. Remember to answer who, did what, when, where, why, and how. Include a headline that will hook the reader. Please cite your source(s):

\_\_\_\_\_

\_\_\_\_\_



Name: \_\_\_\_\_ Date: \_\_\_\_\_ Block: \_\_\_\_\_

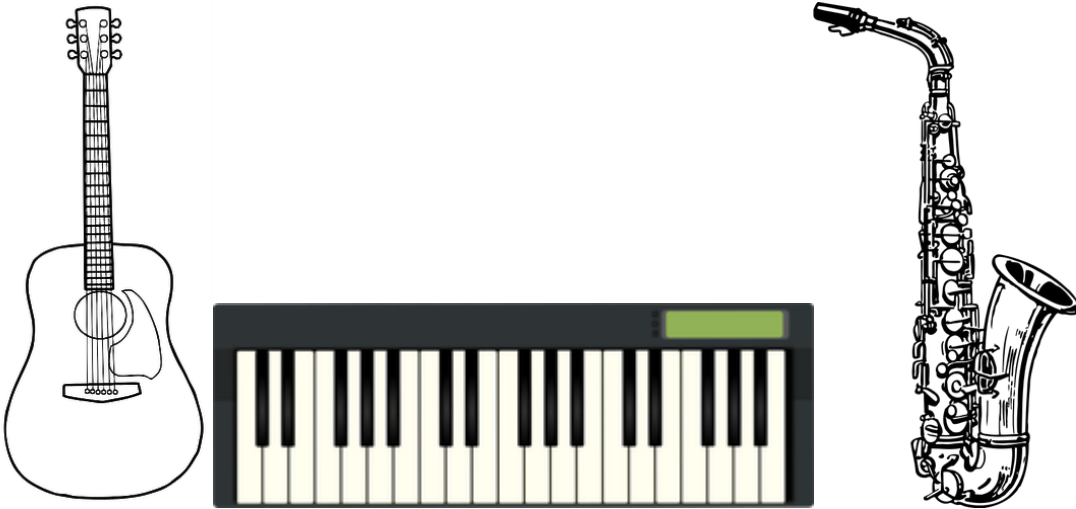
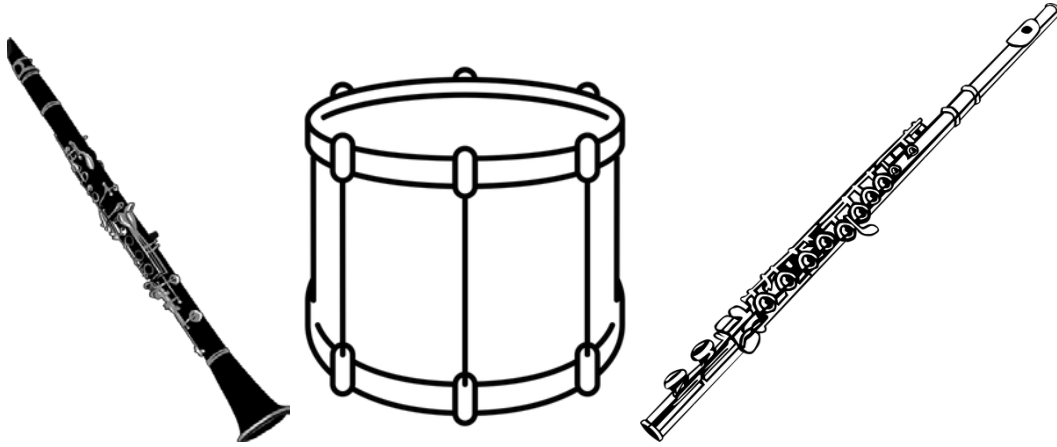
**Day One Art 6-8 Snow Day Packet**

Draw your idea of Paradise.

Name: \_\_\_\_\_ Date: \_\_\_\_\_ Block: \_\_\_\_\_

**Day One Music 6-8 Snow Day Packet**

Write the name of the instrument on the line.



Name: \_\_\_\_\_ Date: \_\_\_\_\_ Block: \_\_\_\_\_

**Day Two Mathematics 6 - 8 Snow Day Packet**

Day Two – You are a high school graduate.

According to the United States Bureau of Labor Statistics, a high school graduate has median weekly earnings of \$730.00. Net Income is the amount you earn after deductions. Mandatory payroll deductions are 20%.

How much is your net income per week? \_\_\_\_\_

How much is your net income per month? \_\_\_\_\_

How much are you saving if you are saving twenty percent each month? \_\_\_\_\_

How much money do you have after depositing 20% in your savings account? \_\_\_\_\_

How much are you spending on fixed expenses if you are spending 50% each month? \_\_\_\_\_

Where do you live? Enter the amount here \_\_\_\_\_

\_\_\_\_\_ An efficiency apartment (\$400.00)

\_\_\_\_\_ An apartment (\$700.00)

\_\_\_\_\_ A town house (\$1000.00)

\_\_\_\_\_ A small house (\$1200.00)

\_\_\_\_\_ A larger house (\$1500.00)

Your utilities are based on the type of housing you chose. Enter the amount here \_\_\_\_\_

\_\_\_\_\_ An efficiency apartment (\$40.00)

\_\_\_\_\_ An apartment (\$200.00)

\_\_\_\_\_ A town house (\$260.00)

\_\_\_\_\_ A small house (\$340.00)

\_\_\_\_\_ A larger house (\$390.00)

Which mode of transportation\* will you use? Enter the amount here \_\_\_\_\_

\*Fuel and car insurance are included in the cost.

\_\_\_\_\_ Walk (0)

\_\_\_\_\_ Public Transportation (\$90.00)

\_\_\_\_\_ A subcompact vehicle (\$470.00)

\_\_\_\_\_ A compact vehicle (\$580.00)

\_\_\_\_\_ A luxury vehicle (\$1725.00)

How much did you spend on fixed expenses? \_\_\_\_\_

Did you spend more or less than 50% of your net income on fixed expenses? \_\_\_\_\_

How much money do you have left to spend on variable expenses? \_\_\_\_\_

Name: \_\_\_\_\_ Date: \_\_\_\_\_ Block: \_\_\_\_\_

### Day Two Mathematics 6 - 8 Snow Day Packet

How much are you spending on variable expenses if you are spending 30% each month? \_\_\_\_\_

Did you have that much money left at the bottom of the page you just finished? \_\_\_\_\_

How much spendable income do you have left? \_\_\_\_\_

Which food habits best describe you? Enter the cost here \_\_\_\_\_

- \_\_\_\_\_ I eat at the homes of different friends and families every day. (0)
- \_\_\_\_\_ I watch the sales papers and clip coupons. (\$150.00)
- \_\_\_\_\_ I only buy the store brand necessities. (\$300.00)
- \_\_\_\_\_ I buy a mixture of store brand and name brand necessities. (\$500.00)
- \_\_\_\_\_ I buy organic, name brand items and eat at restaurants. (\$1000.00)

Which shopping habits best describe you. Enter the cost here \_\_\_\_\_

- \_\_\_\_\_ I shop at clothing giveaways (0)
- \_\_\_\_\_ I shop once a month at yard sales and second hand shops. (\$50.00)
- \_\_\_\_\_ I hit the sale racks twice a month. (\$150.00)
- \_\_\_\_\_ I shop three times a month, but I look at price tags. (\$250.00)
- \_\_\_\_\_ I shop every week and don't pay attention to the price tags. (\$500.00)

Which entertainment habits best describe you? Enter the cost here \_\_\_\_\_

Check all that describe you and total the cost.

- \_\_\_\_\_ I want to stay home or engage in free activities. (0)
- \_\_\_\_\_ I want my landline. (\$30.00)
- \_\_\_\_\_ I want basic cell service. (\$40.00)
- \_\_\_\_\_ I want my smart phone. (\$90.00)
- \_\_\_\_\_ I want high speed internet. (\$45.00)
- \_\_\_\_\_ I want basic TV. (\$100.00)
- \_\_\_\_\_ I want premium TV. (\$190.00)
- \_\_\_\_\_ I want to go out every week-end to participate in low priced activities. (\$250.00)
- \_\_\_\_\_ I want to go out every week-end and participate in expensive activities. (\$400.00)

How much did you spend on variable expenses? \_\_\_\_\_

Did you spend more or less than 30% of your net income on variable expenses? \_\_\_\_\_

How much money did you have left at the end of the month? \_\_\_\_\_

If you spent more money than you earned, go back and make changes to your original choices.  
You cannot spend more than you earn!

Name: \_\_\_\_\_ Date: \_\_\_\_\_ Block: \_\_\_\_\_

**Day Two English 6 - 8 Snow Day Packet**

Students read their pleasure reading book for at least sixty minutes and complete their reading log.

Date	Start Page	Stop Page	Total Pages	Plot or Topic Summary Today, I read about ... I am at the part where ... Describe one thing that happened.

Students complete the assignment below for a fiction book.

Title:

\_\_\_\_\_

Author:

\_\_\_\_\_

Characters:

\_\_\_\_\_

Protagonist:

\_\_\_\_\_

Antagonist:

\_\_\_\_\_

Setting:

\_\_\_\_\_

Clues to Setting:

\_\_\_\_\_

Point of View:

\_\_\_\_\_

One sentence that demonstrates point of view:

\_\_\_\_\_

Unknown Word in a Sentence:

\_\_\_\_\_

Definition of Unknown Word:

\_\_\_\_\_

In the event you finish your book, do not have a book to read, or do not choose to read for sixty minutes, choose one of the following options **and** one of the writing options:

Design a book cover.

Create a word cloud.

Prepare a Book Talk.

Writing Options:

Write the sequel to the narrative you were reading.

Write an informative composition that would enhance one's understanding of the book you were reading.

Write an argumentative composition that would argue whether the book you were reading should be made into a movie.

Name: \_\_\_\_\_ Date: \_\_\_\_\_ Block: \_\_\_\_\_

**Day Two English 6 - 8 Snow Day Packet**

Students complete the assignment below for a non-fiction book.

Title of Book:	
Page(s) read: _____	
Date read: _____	
<b>3</b>	Things I learned: •  •  •
<b>2</b>	Things I Found Interesting: •  •
<b>1</b>	Question I Still Have: •

★ Rating: ★ ★ ★ ★ ★

In the event you finish your book, do not have a book to read, or do not choose to read for sixty minutes, choose one of the following options **and** one of the writing options:

Design a book cover.

Create a word cloud.

Prepare a Book Talk.

Writing Options:

Write the sequel to the narrative you were reading.

Write an informative composition that would enhance one's understanding of the book you were reading.

Write an argumentative composition that would argue whether the book you were reading should be made into a movie.

Name: \_\_\_\_\_ Date: \_\_\_\_\_ Block: \_\_\_\_\_

**Day Two Science 6 - 8 Snow Day Packet**

For each snow day, choose ONE article from *Science World* to read. Upon completion of the article, complete the attached 3, 2, 1 to show understanding.

Title of Article:	
Page(s) read: _____	
Date read: _____	
<b>3</b>	Things I learned: <ul style="list-style-type: none"><li>•</li><li>•</li><li>•</li></ul>
<b>2</b>	Things I Found Interesting: <ul style="list-style-type: none"><li>•</li><li>•</li></ul>
<b>1</b>	Question I Still Have: <ul style="list-style-type: none"><li>•</li></ul>

★ Rating: ★★☆☆☆

If you do not have your *Science World*, please complete the 3-2-1 using a topic being presented in class that you researched today or formulate an investigative question, such as, "When will we return to school?" Provide research and background information that will help you respond to your investigative question. State your hypotheses. Discuss the variables related to your investigative question. Present evidence to support or refute your hypotheses. Share why your hypotheses was supported or refuted and ideas for future investigative questions related to this inquiry.

Name: \_\_\_\_\_ Date: \_\_\_\_\_ Block: \_\_\_\_\_

**Day Two Social Studies 6 - 8 Snow Day Packet**

For each snow day, choose ONE article from *Junior Scholastic* to read. Upon completion of the article, complete the attached 3, 2, 1 to show understanding.

Title of Article: _____	
Page(s) read: _____	
Date read: _____	
<b>3</b>	Things I learned: •  •  •
<b>2</b>	Things I Found Interesting: •  •
<b>1</b>	Question I Still Have: •

★ Rating: ★ ★ ★ ★ ★

If you do not have your *Junior Scholastic*, please complete the 3-2-1 using a topic being presented in class that you researched today or write a news story on a current event you investigated. Remember to answer who, did what, when, where, why, and how. Include a headline that will hook the reader. Please cite your source(s):

\_\_\_\_\_

\_\_\_\_\_



Name: \_\_\_\_\_ Date: \_\_\_\_\_ Block: \_\_\_\_\_

**Day Two Art 6-8 Snow Day Packet**

You are a toy designer. Draw your new toy.

Name: \_\_\_\_\_ Date: \_\_\_\_\_ Block: \_\_\_\_\_

## Day Two Music 6-8 Snow Day Packet

### Concert Etiquette Quiz

**1. You should enter the auditorium/cafeateria**

- a. As loudly as possible
- b. Quietly
- c. Walking backwards

**2. It is always a good idea to arrive**

- a. A bit early
- b. Just as the performance is beginning
- c. Only in time to catch your child's performance

**3. If you must arrive late, it is best to enter**

- a. Whenever you arrive
- b. During your child's performance
- c. Between musical selections

**4. During the concert, it is a good idea to**

- a. Discuss the performance
- b. Sit quietly and listen
- c. Eat dinner

**5. For mobile phone usage during a performance it is best to**

- a. Answer your phone quickly and speak quietly
- b. Leave the room to use the phone
- c. Turn the phone off, or better yet, leave it in the car

**6. Applause should be given when**

- a. The performance is completed and the conductor faces the audience
- b. Your child has completed his or her part
- c. Any time something is done well

**7. After the performance is over**

- a. You should leave your seat and rush up to the stage to find your child
- b. Exclaim loudly how tired you are
- c. Sit and wait until all the children have cleared the stage

**8. On the way home it's a good idea to**

- a. Critique the performance
- b. Offer your praise
- c. Offer your sympathy



**Flip over the page to check your concert etiquette!**

Name: \_\_\_\_\_ Date: \_\_\_\_\_ Block: \_\_\_\_\_

### Day Three Mathematics 6 - 8 Snow Day Packet

Day Three – You have some education beyond high school.

According to the United States Bureau of Labor Statistics, a person with some education beyond high school has median weekly earnings of \$802.00. Mandatory payroll deductions are twenty percent. How much is your net income per week? \_\_\_\_\_

How much is your net income per month? \_\_\_\_\_

How much are you saving if you are saving twenty percent each month? \_\_\_\_\_

How much money do you have after depositing 20% in your savings account? \_\_\_\_\_

How much are you spending on fixed expenses if you are spending 50% each month? \_\_\_\_\_

Where do you live? Enter the amount here \_\_\_\_\_

\_\_\_\_\_ An efficiency apartment (\$400.00)

\_\_\_\_\_ An apartment (\$700.00)

\_\_\_\_\_ A town house (\$1000.00)

\_\_\_\_\_ A small house (\$1200.00)

\_\_\_\_\_ A larger house (\$1500.00)

Your utilities are based on the type of housing you chose. Enter the amount here \_\_\_\_\_

\_\_\_\_\_ An efficiency apartment (\$40.00)

\_\_\_\_\_ An apartment (\$200.00)

\_\_\_\_\_ A town house (\$260.00)

\_\_\_\_\_ A small house (\$340.00)

\_\_\_\_\_ A larger house (\$390.00)

Which mode of transportation\* will you use? Enter the amount here \_\_\_\_\_

\*Fuel and car insurance are included in the cost.

\_\_\_\_\_ Walk (0)

\_\_\_\_\_ Public Transportation (\$90.00)

\_\_\_\_\_ A subcompact vehicle (\$470.00)

\_\_\_\_\_ A compact vehicle (\$580.00)

\_\_\_\_\_ A luxury vehicle (\$1725.00)

How much did you spend on fixed expenses? \_\_\_\_\_

Did you spend more or less than 50% of your net income on fixed expenses? \_\_\_\_\_

How much money do you have left to spend on variable expenses? \_\_\_\_\_

Name: \_\_\_\_\_ Date: \_\_\_\_\_ Block: \_\_\_\_\_

### Day Three Mathematics 6 - 8 Snow Day Packet

How much are you spending on variable expenses if you are spending 30% each month? \_\_\_\_\_

Did you have that much money left at the bottom of the page you just finished? \_\_\_\_\_

How much spendable income do you have left? \_\_\_\_\_

Which food habits best describe you? Enter the cost here \_\_\_\_\_

- \_\_\_\_\_ I eat at the homes of different friends and families every day. (0)
- \_\_\_\_\_ I watch the sales papers and clip coupons. (\$150.00)
- \_\_\_\_\_ I only buy the store brand necessities. (\$300.00)
- \_\_\_\_\_ I buy a mixture of store brand and name brand necessities. (\$500.00)
- \_\_\_\_\_ I buy organic, name brand items and eat at restaurants. (\$1000.00)

Which shopping habits best describe you. Enter the cost here \_\_\_\_\_

- \_\_\_\_\_ I shop at clothing giveaways (0)
- \_\_\_\_\_ I shop once a month at yard sales and second hand shops. (\$50.00)
- \_\_\_\_\_ I hit the sale racks twice a month. (\$150.00)
- \_\_\_\_\_ I shop three times a month, but I look at price tags. (\$250.00)
- \_\_\_\_\_ I shop every week and don't pay attention to the price tags. (\$500.00)

Which entertainment habits best describe you? Enter the cost here \_\_\_\_\_

Check all that describe you and total the cost.

- \_\_\_\_\_ I want to stay home or engage in free activities. (0)
- \_\_\_\_\_ I want my landline. (\$30.00)
- \_\_\_\_\_ I want basic cell service. (\$40.00)
- \_\_\_\_\_ I want my smart phone. (\$90.00)
- \_\_\_\_\_ I want high speed internet. (\$45.00)
- \_\_\_\_\_ I want basic TV. (\$100.00)
- \_\_\_\_\_ I want premium TV. (\$190.00)
- \_\_\_\_\_ I want to go out every week-end to participate in low priced activities. (\$250.00)
- \_\_\_\_\_ I want to go out every week-end and participate in expensive activities. (\$400.00)

How much did you spend on variable expenses? \_\_\_\_\_

Did you spend more or less than 30% of your net income on fixed expenses? \_\_\_\_\_

How much money did you have left at the end of the month? \_\_\_\_\_

If you spent more money than you earned, go back and make changes to your original choices.

You cannot spend more than you earn!

Name: \_\_\_\_\_ Date: \_\_\_\_\_ Block: \_\_\_\_\_

**Day Three English 6 - 8 Snow Day Packet**

Students read their pleasure reading book for at least sixty minutes and complete their reading log.

Date	Start Page	Stop Page	Total Pages	Plot or Topic Summary Today, I read about ... I am at the part where ... Describe one thing that happened.

Students complete the assignment below for a fiction book.

Title:

\_\_\_\_\_

Author:

\_\_\_\_\_

Characters:

\_\_\_\_\_

Protagonist:

\_\_\_\_\_

Antagonist:

\_\_\_\_\_

Setting:

\_\_\_\_\_

Clues to Setting:

\_\_\_\_\_

Point of View:

\_\_\_\_\_

One sentence that demonstrates point of view:

\_\_\_\_\_

Unknown Word in a Sentence:

\_\_\_\_\_

Definition of Unknown Word:

\_\_\_\_\_

In the event you finish your book, do not have a book to read, or do not choose to read for sixty minutes, choose one of the following options **and** one of the writing options:

Design a book cover.

Create a word cloud.

Prepare a Book Talk.

Writing Options:

Write the sequel to the narrative you were reading.

Write an informative composition that would enhance one's understanding of the book you were reading.

Write an argumentative composition that would argue whether the book you were reading should be made into a movie.

Name: \_\_\_\_\_ Date: \_\_\_\_\_ Block: \_\_\_\_\_

**Day Three English 6 - 8 Snow Day Packet**

Students complete the assignment below for a non-fiction book.

Title of Book:	
Page(s) read: _____	
Date read: _____	
<b>3</b>	Things I learned: •  •  •
<b>2</b>	Things I Found Interesting: •  •
<b>1</b>	Question I Still Have: •

★ Rating: ★ ★ ★ ★ ★

In the event you finish your book, do not have a book to read, or do not choose to read for sixty minutes, choose one of the following options **and** one of the writing options:

Design a book cover.

Create a word cloud.

Prepare a Book Talk.

Writing Options:

Write the sequel to the narrative you were reading.

Write an informative composition that would enhance one's understanding of the book you were reading.

Write an argumentative composition that would argue whether the book you were reading should be made into a movie.

Name: \_\_\_\_\_ Date: \_\_\_\_\_ Block: \_\_\_\_\_

**Day Three Science 6 - 8 Snow Day Packet**

For each snow day, choose ONE article from *Science World* to read. Upon completion of the article, complete the attached 3, 2, 1 to show understanding.

Title of Article:	
Page(s) read: _____	
Date read: _____	
<b>3</b>	Things I learned: <ul style="list-style-type: none"><li>•</li><li>•</li><li>•</li></ul>
<b>2</b>	Things I Found Interesting: <ul style="list-style-type: none"><li>•</li><li>•</li></ul>
<b>1</b>	Question I Still Have: <ul style="list-style-type: none"><li>•</li></ul>

★ Rating: ★★☆☆☆

If you do not have your *Science World*, please complete the 3-2-1 using a topic being presented in class that you researched today or formulate an investigative question, such as, "When will we return to school?" Provide research and background information that will help you respond to your investigative question. State your hypotheses. Discuss the variables related to your investigative question. Present evidence to support or refute your hypotheses. Share why your hypotheses was supported or refuted and ideas for future investigative questions related to this inquiry.

Name: \_\_\_\_\_ Date: \_\_\_\_\_ Block: \_\_\_\_\_

**Day Three Social Studies 6 - 8 Snow Day Packet**

For each snow day, choose ONE article from *Junior Scholastic* to read. Upon completion of the article, complete the attached 3, 2, 1 to show understanding.

Title of Article:	
Page(s) read: _____	
Date read: _____	
<b>3</b>	Things I learned: <ul style="list-style-type: none"><li>•</li><li>•</li><li>•</li></ul>
<b>2</b>	Things I Found Interesting: <ul style="list-style-type: none"><li>•</li><li>•</li></ul>
<b>1</b>	Question I Still Have: <ul style="list-style-type: none"><li>•</li></ul>

★ Rating: ★ ★ ★ ★ ★

If you do not have your *Junior Scholastic*, please complete the 3-2-1 using a topic being presented in class that you researched today or write a news story on a current event you investigated. Remember to answer who, did what, when, where, why, and how. Include a headline that will hook the reader. Please cite your source(s):

\_\_\_\_\_

\_\_\_\_\_



Name: \_\_\_\_\_ Date: \_\_\_\_\_ Block: \_\_\_\_\_

**Day Three Art 6-8 Snow Day Packet**

Draw yourself as a robot.

Name: \_\_\_\_\_ Date: \_\_\_\_\_ Block: \_\_\_\_\_

Day Three Music 6-8 Snow Day Packet

*Music Theory  
Matching*

*bass cleff*

*half note*

*sharp*

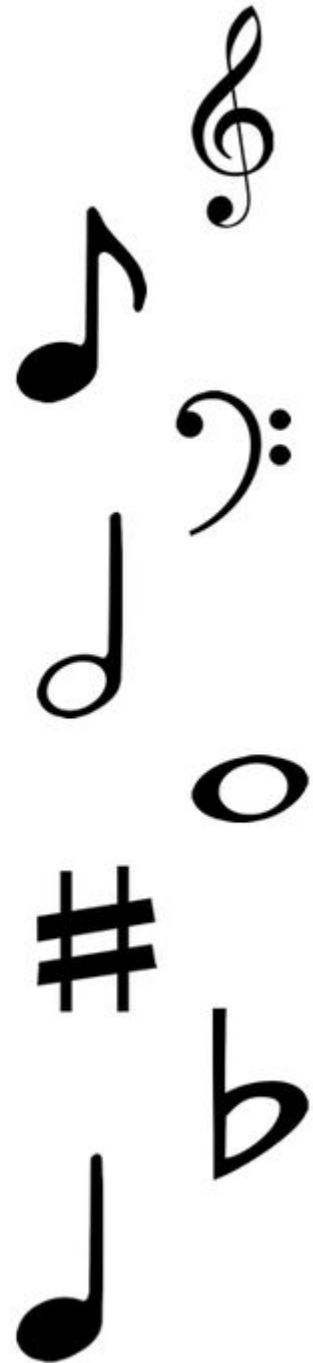
*quarter note*

*eighth note*

*treble cleff*

*whole note*

*flat*



Name: \_\_\_\_\_ Date: \_\_\_\_\_ Block: \_\_\_\_\_

### Day Four Mathematics 6 - 8 Snow Day Packet

Day Four – You have an associate’s degree or certification from a career and technical center.

According to the United States Bureau of Labor Statistics, a person with an associate’s degree or certification has median weekly earnings of \$862.00. Mandatory payroll deductions are twenty percent. How much is your net income per week? \_\_\_\_\_

How much is your net income per month? \_\_\_\_\_

How much are you saving if you are saving twenty percent each month? \_\_\_\_\_

How much money do you have after depositing 20% in your savings account? \_\_\_\_\_

How much are you spending on fixed expenses if you are spending 50% each month? \_\_\_\_\_

You have an additional fixed expense because you borrowed \$25,000.00 to pay for your education beyond high school.

How quickly are you going to pay back the loan? Enter the amount here \_\_\_\_\_

\_\_\_\_\_ I am going to pay back the loan in ten years. (\$278.00)

\_\_\_\_\_ I am going to pay back the loan in twenty-five years. (\$161.00)

Where do you live? Enter the amount here \_\_\_\_\_

Your utilities are included in your housing costs.

\_\_\_\_\_ An efficiency apartment (\$440.00)

\_\_\_\_\_ An apartment (\$900.00)

\_\_\_\_\_ A town house (\$1260.00)

\_\_\_\_\_ A small house (\$1540.00)

\_\_\_\_\_ A larger house (\$1890.00)

Which mode of transportation\* will you use? Enter the amount here \_\_\_\_\_

\*Fuel and car insurance are included in the cost.

\_\_\_\_\_ Walk (0)

\_\_\_\_\_ Public Transportation (\$90.00)

\_\_\_\_\_ A subcompact vehicle (\$470.00)

\_\_\_\_\_ A compact vehicle (\$580.00)

\_\_\_\_\_ A luxury vehicle (\$1725.00)

How much did you spend on fixed expenses? \_\_\_\_\_

Did you spend more or less than 50% of your net income on fixed expenses? \_\_\_\_\_

How much money do you have left to spend on variable expenses? \_\_\_\_\_

Name: \_\_\_\_\_ Date: \_\_\_\_\_ Block: \_\_\_\_\_

### Day Four Mathematics 6 - 8 Snow Day Packet

How much are you spending on variable expenses if you are spending 30% each month? \_\_\_\_\_

Did you have that much money left at the bottom of the page you just finished? \_\_\_\_\_

How much spendable income do you have left? \_\_\_\_\_

Which food habits best describe you? Enter the cost here \_\_\_\_\_

- \_\_\_\_\_ I eat at the homes of different friends and families every day. (0)
- \_\_\_\_\_ I watch the sales papers and clip coupons. (\$150.00)
- \_\_\_\_\_ I only buy the store brand necessities. (\$300.00)
- \_\_\_\_\_ I buy a mixture of store brand and name brand necessities. (\$500.00)
- \_\_\_\_\_ I buy organic, name brand items and eat at restaurants. (\$1000.00)

Which shopping habits best describe you. Enter the cost here \_\_\_\_\_

- \_\_\_\_\_ I shop at clothing giveaways (0)
- \_\_\_\_\_ I shop once a month at yard sales and second hand shops. (\$50.00)
- \_\_\_\_\_ I hit the sale racks twice a month. (\$150.00)
- \_\_\_\_\_ I shop three times a month, but I look at price tags. (\$250.00)
- \_\_\_\_\_ I shop every week and don't pay attention to the price tags. (\$500.00)

Which entertainment habits best describe you? Enter the cost here \_\_\_\_\_

Check all that describe you and total the cost.

- \_\_\_\_\_ I want to stay home or engage in free activities. (0)
- \_\_\_\_\_ I want my landline. (\$30.00)
- \_\_\_\_\_ I want basic cell service. (\$40.00)
- \_\_\_\_\_ I want my smart phone. (\$90.00)
- \_\_\_\_\_ I want high speed internet. (\$45.00)
- \_\_\_\_\_ I want basic TV. (\$100.00)
- \_\_\_\_\_ I want premium TV. (\$190.00)
- \_\_\_\_\_ I want to go out every week-end to participate in low priced activities. (\$250.00)
- \_\_\_\_\_ I want to go out every week-end and participate in expensive activities. (\$400.00)

How much did you spend on variable expenses? \_\_\_\_\_

Did you spend more or less than 30% of your net income on fixed expenses? \_\_\_\_\_

How much money did you have left at the end of the month? \_\_\_\_\_

If you spent more money than you earned, go back and make changes to your original choices.

You cannot spend more than you earn!

Name: \_\_\_\_\_ Date: \_\_\_\_\_ Block: \_\_\_\_\_

**Day Four English 6 - 8 Snow Day Packet**

Students read their pleasure reading book for at least sixty minutes and complete their reading log.

Date	Start Page	Stop Page	Total Pages	Plot or Topic Summary Today, I read about ... I am at the part where ... Describe one thing that happened.

Students complete the assignment below for a fiction book.

Title:

\_\_\_\_\_

Author:

\_\_\_\_\_

Characters:

\_\_\_\_\_

Protagonist:

\_\_\_\_\_

Antagonist:

\_\_\_\_\_

Setting:

\_\_\_\_\_

Clues to Setting:

\_\_\_\_\_

Point of View:

\_\_\_\_\_

One sentence that demonstrates point of view:

\_\_\_\_\_

Unknown Word in a Sentence:

\_\_\_\_\_

Definition of Unknown Word:

\_\_\_\_\_

In the event you finish your book, do not have a book to read, or do not choose to read for sixty minutes, choose one of the following options **and** one of the writing options:

Design a book cover.

Create a word cloud.

Prepare a Book Talk.

Writing Options:

Write the sequel to the narrative you were reading.

Write an informative composition that would enhance one's understanding of the book you were reading.

Write an argumentative composition that would argue whether the book you were reading should be made into a movie.

Name: \_\_\_\_\_ Date: \_\_\_\_\_ Block: \_\_\_\_\_

**Day Four English 6 - 8 Snow Day Packet**

Students complete the assignment below for a non-fiction book.

Title of Book:	
Page(s) read: _____	
Date read: _____	
<b>3</b>	Things I learned: •  •  •
<b>2</b>	Things I Found Interesting: •  •
<b>1</b>	Question I Still Have: •

★ Rating: ★ ★ ★ ★ ★

In the event you finish your book, do not have a book to read, or do not choose to read for sixty minutes, choose one of the following options **and** one of the writing options:

Design a book cover.

Create a word cloud.

Prepare a Book Talk.

Writing Options:

Write the sequel to the narrative you were reading.

Write an informative composition that would enhance one's understanding of the book you were reading.

Write an argumentative composition that would argue whether the book you were reading should be made into a movie.

Name: \_\_\_\_\_ Date: \_\_\_\_\_ Block: \_\_\_\_\_

**Day Four Science 6 - 8 Snow Day Packet**

For each snow day, choose ONE article from *Science World* to read. Upon completion of the article, complete the attached 3, 2, 1 to show understanding.

Title of Article:	
Page(s) read: _____	
Date read: _____	
<b>3</b>	Things I learned: <ul style="list-style-type: none"><li>•</li><li>•</li><li>•</li></ul>
<b>2</b>	Things I Found Interesting: <ul style="list-style-type: none"><li>•</li><li>•</li></ul>
<b>1</b>	Question I Still Have: <ul style="list-style-type: none"><li>•</li></ul>

★ Rating: ★★☆☆☆

If you do not have your *Science World*, please complete the 3-2-1 using a topic being presented in class that you researched today or formulate an investigative question, such as, "When will we return to school?" Provide research and background information that will help you respond to your investigative question. State your hypotheses. Discuss the variables related to your investigative question. Present evidence to support or refute your hypotheses. Share why your hypotheses was supported or refuted and ideas for future investigative questions related to this inquiry.

Name: \_\_\_\_\_ Date: \_\_\_\_\_ Block: \_\_\_\_\_

**Day Four Social Studies 6 - 8 Snow Day Packet**

For each snow day, choose ONE article from *Junior Scholastic* to read. Upon completion of the article, complete the attached 3, 2, 1 to show understanding.

Title of Article: _____	
Page(s) read: _____	
Date read: _____	
<b>3</b>	Things I learned: <ul style="list-style-type: none"><li>•</li><li>•</li><li>•</li></ul>
<b>2</b>	Things I Found Interesting: <ul style="list-style-type: none"><li>•</li><li>•</li></ul>
<b>1</b>	Question I Still Have: <ul style="list-style-type: none"><li>•</li></ul>

★ Rating: ★ ★ ★ ★ ★

If you do not have your *Junior Scholastic*, please complete the 3-2-1 using a topic being presented in class that you researched today or write a news story on a current event you investigated. Remember to answer who, did what, when, where, why, and how. Include a headline that will hook the reader. Please cite your source(s):

\_\_\_\_\_

\_\_\_\_\_



Name: \_\_\_\_\_ Date: \_\_\_\_\_ Block: \_\_\_\_\_

**Day Four Art 6-8 Snow Day Packet**

Draw a castle.

Name: \_\_\_\_\_ Date: \_\_\_\_\_ Block: \_\_\_\_\_

**Day Four Music 6-8 Snow Day Packet**

**Music in The Media**

Music can be used to create the perfect atmosphere in a particular film scene, by setting the right tone and mood for the plot moment. Music in the movie can help you detect the level of drama, atmosphere or mood in the movie or scene.

1. Watch a five minute portion of one of your favorite movies that has background music, with the volume turned off. Rewatch that same portion with the volume on.

● What type or genre of music did you hear? \_\_\_\_\_

● Identify the instruments you heard.

\_\_\_\_\_  
\_\_\_\_\_

● What elements of music did you hear?

○ Tempo (speed) \_\_\_\_\_

○ Dynamics (Loudness or softness) \_\_\_\_\_

○ Melody (tune) \_\_\_\_\_

○ Harmony \_\_\_\_\_

○ Rhythm \_\_\_\_\_

● What is the purpose of music in the scene and how did the music add to the scene.

\_\_\_\_\_  
\_\_\_\_\_  
\_\_\_\_\_  
\_\_\_\_\_

● What movie and scene did you watch?

\_\_\_\_\_

Name: \_\_\_\_\_ Date: \_\_\_\_\_ Block: \_\_\_\_\_

### Day Five Mathematics 6 - 8 Snow Day Packet

Day Five – You have finished paying for your education and are in the job of your dreams.

According to the United States Bureau of Labor Statistics, a person with a professional degree has median weekly earnings of \$1884.00. You are making more money, but your mandatory payroll deductions increased to 30%. How much is your net income per week? \_\_\_\_\_

How much is your net income per month? \_\_\_\_\_

How much are you saving if you are saving twenty percent each month? \_\_\_\_\_

How much money do you have after depositing 20% in your savings account? \_\_\_\_\_

How much are you spending on fixed expenses if you are spending 50% each month? \_\_\_\_\_

Where do you live? Enter the amount here \_\_\_\_\_

Your utilities are included in your housing costs.

\_\_\_\_\_ An efficiency apartment (\$440.00)

\_\_\_\_\_ An apartment (\$900.00)

\_\_\_\_\_ A town house (\$1260.00)

\_\_\_\_\_ A small house (\$1540.00)

\_\_\_\_\_ A larger house (\$1890.00)

Which mode of transportation\* will you use? Enter the amount here \_\_\_\_\_

\*Fuel and car insurance are included in the cost.

\_\_\_\_\_ Walk (0)

\_\_\_\_\_ Public Transportation (\$90.00)

\_\_\_\_\_ A subcompact vehicle (\$470.00)

\_\_\_\_\_ A compact vehicle (\$580.00)

\_\_\_\_\_ A luxury vehicle (\$1725.00)

How much did you spend on fixed expenses? \_\_\_\_\_

Did you spend more or less than 50% of your net income on fixed expenses? \_\_\_\_\_

How much money do you have left for variable expenses? \_\_\_\_\_

How much are you spending on variable expenses if you are spending 30% each month? \_\_\_\_\_

Name: \_\_\_\_\_ Date: \_\_\_\_\_ Block: \_\_\_\_\_

### Day Four Mathematics 6 - 8 Snow Day Packet

How much money do you have to spend on variable expenses? \_\_\_\_\_

Which food habits best describe you? Enter the cost here \_\_\_\_\_

- \_\_\_\_\_ I eat at the homes of different friends and families every day. (0)
- \_\_\_\_\_ I watch the sales papers and clip coupons. (\$150.00)
- \_\_\_\_\_ I only buy the store brand necessities. (\$300.00)
- \_\_\_\_\_ I buy a mixture of store brand and name brand necessities. (\$500.00)
- \_\_\_\_\_ I buy organic, name brand items and eat at restaurants. (\$1000.00)

Which shopping habits best describe you. Enter the cost here \_\_\_\_\_

- \_\_\_\_\_ I shop at clothing giveaways (0)
- \_\_\_\_\_ I shop once a month at yard sales and second hand shops. (\$50.00)
- \_\_\_\_\_ I hit the sale racks twice a month. (\$150.00)
- \_\_\_\_\_ I shop three times a month, but I look at price tags. (\$250.00)
- \_\_\_\_\_ I shop every week and don't pay attention to the price tags. (\$500.00)

Which entertainment habits best describe you? Enter the cost here \_\_\_\_\_

Check all that describe you and total the cost.

- \_\_\_\_\_ I want to stay home or engage in free activities. (0)
- \_\_\_\_\_ I want my landline. (\$30.00)
- \_\_\_\_\_ I want basic cell service. (\$40.00)
- \_\_\_\_\_ I want my smart phone. (\$90.00)
- \_\_\_\_\_ I want high speed internet. (\$45.00)
- \_\_\_\_\_ I want basic TV. (\$100.00)
- \_\_\_\_\_ I want premium TV. (\$190.00)
- \_\_\_\_\_ I want to go out every week-end to participate in low priced activities. (\$250.00)
- \_\_\_\_\_ I want to go out every week-end and participate in expensive activities. (\$400.00)

How much did you spend on variable expenses? \_\_\_\_\_

Did you spend more or less than 30% of your net income on fixed expenses? \_\_\_\_\_

How much money did you have left at the end of the month? \_\_\_\_\_

If you spent more money than you earned, go back and make changes to your original choices.

You cannot spend more than you earn!

What is the most important lesson you learned from these exercises?

\_\_\_\_\_  
\_\_\_\_\_

Name: \_\_\_\_\_ Date: \_\_\_\_\_ Block: \_\_\_\_\_

**Day Five English 6 - 8 Snow Day Packet**

Students read their pleasure reading book for at least sixty minutes and complete their reading log.

Date	Start Page	Stop Page	Total Pages	Plot or Topic Summary Today, I read about ... I am at the part where ... Describe one thing that happened.

Students complete the assignment below for a fiction book.

Title:

\_\_\_\_\_

Author:

\_\_\_\_\_

Characters:

\_\_\_\_\_

Protagonist:

\_\_\_\_\_

Antagonist:

\_\_\_\_\_

Setting:

\_\_\_\_\_

Clues to Setting:

\_\_\_\_\_

Point of View:

\_\_\_\_\_

One sentence that demonstrates point of view:

\_\_\_\_\_

Unknown Word in a Sentence:

\_\_\_\_\_

Definition of Unknown Word:

\_\_\_\_\_

In the event you finish your book, do not have a book to read, or do not choose to read for sixty minutes, choose one of the following options **and** one of the writing options:

Design a book cover.

Create a word cloud.

Prepare a Book Talk.

Writing Options:

Write the sequel to the narrative you were reading.

Write an informative composition that would enhance one's understanding of the book you were reading.

Write an argumentative composition that would argue whether the book you were reading should be made into a movie.

Name: \_\_\_\_\_ Date: \_\_\_\_\_ Block: \_\_\_\_\_

**Day Five English 6 - 8 Snow Day Packet**

Students complete the assignment below for a non-fiction book.

Title of Book:	
Page(s) read: _____	
Date read: _____	
<b>3</b>	Things I learned: •  •  •
<b>2</b>	Things I Found Interesting: •  •
<b>1</b>	Question I Still Have: •

★ Rating: ★ ★ ★ ★ ★

In the event you finish your book, do not have a book to read, or do not choose to read for sixty minutes, choose one of the following options **and** one of the writing options:

Design a book cover.

Create a word cloud.

Prepare a Book Talk.

Writing Options:

Write the sequel to the narrative you were reading.

Write an informative composition that would enhance one's understanding of the book you were reading.

Write an argumentative composition that would argue whether the book you were reading should be made into a movie.

Name: \_\_\_\_\_ Date: \_\_\_\_\_ Block: \_\_\_\_\_

**Day Five Science 6 - 8 Snow Day Packet**

For each snow day, choose ONE article from *Science World* to read. Upon completion of the article, complete the attached 3, 2, 1 to show understanding.

Title of Article:	
Page(s) read: _____	
Date read: _____	
<b>3</b>	Things I learned: <ul style="list-style-type: none"><li>•</li><li>•</li><li>•</li></ul>
<b>2</b>	Things I Found Interesting: <ul style="list-style-type: none"><li>•</li><li>•</li></ul>
<b>1</b>	Question I Still Have: <ul style="list-style-type: none"><li>•</li></ul>

★ Rating: ★★☆☆☆

If you do not have your *Science World*, please complete the 3-2-1 using a topic being presented in class that you researched today or formulate an investigative question, such as, "When will we return to school?" Provide research and background information that will help you respond to your investigative question. State your hypotheses. Discuss the variables related to your investigative question. Present evidence to support or refute your hypotheses. Share why your hypotheses was supported or refuted and ideas for future investigative questions related to this inquiry.

Name: \_\_\_\_\_ Date: \_\_\_\_\_ Block: \_\_\_\_\_

**Day Five Social Studies 6 - 8 Snow Day Packet**

For each snow day, choose ONE article from *Junior Scholastic* to read. Upon completion of the article, complete the attached 3, 2, 1 to show understanding.

Title of Article: _____	
Page(s) read: _____	
Date read: _____	
<b>3</b>	Things I learned: <ul style="list-style-type: none"><li>•</li><li>•</li><li>•</li></ul>
<b>2</b>	Things I Found Interesting: <ul style="list-style-type: none"><li>•</li><li>•</li></ul>
<b>1</b>	Question I Still Have: <ul style="list-style-type: none"><li>•</li></ul>

★ Rating: ★ ★ ★ ★ ★

If you do not have your *Junior Scholastic*, please complete the 3-2-1 using a topic being presented in class that you researched today or write a news story on a current event you investigated. Remember to answer who, did what, when, where, why, and how. Include a headline that will hook the reader. Please cite your source(s):

\_\_\_\_\_



Name: \_\_\_\_\_ Date: \_\_\_\_\_ Block: \_\_\_\_\_

**Day Five Art 6-8 Snow Day Packet**

Draw your dream room.

Name: \_\_\_\_\_ Date: \_\_\_\_\_ Block: \_\_\_\_\_

**Day Five Music 6-8 Snow Day Packet**

What is Genre in music?

A **genre** is a specific category of music. Many different musical elements are used in all types of genres.

- Lyrics: words of the song
- Instrumentation: what instruments are used in the song
- Tempo: the speed of a song
- Mood: the feeling the composer was trying to create in the music
- Dynamics: changes in the music volume
- Form: the organization of the music into sections.
- Chords & Harmony: two or more different pitches performed at once
- Meter: the organization of beats into groups
- Rhythm: pattern of sound connected to the beat

- 
- Listen to 3 songs of different genres. **On a separate sheet of paper**, Compare and Contrast the songs according to the musical elements listed above. Below are some questions you can answer about the songs. You do not have to answer all of the questions but write a fairly in depth description of the songs discussing a minimum of five questions from the list below.

What is the song about? What instrument families are represented? Did any instruments solo? What combinations are used? What is the tempo of the song? Did the tempo change? What is the mood of the song? Does the mood match the lyrics? Is the music always loud or soft? When do dynamic changes occur? How is repetition used? What parts of the song have harmony? How many and which chords are used? How does the meter make the song feel? Is it easy to dance to? Easy to sing to? Are the rhythms simple or complex?

	Song 1	Song 2	Song 3
Song Title - Artist			
Genre			

Name: \_\_\_\_\_ Date: \_\_\_\_\_ Block: \_\_\_\_\_

**Days One through Five Wellness (Health and Physical Education) 6 - 8 Snow Day Packet**

Complete the following exercises in preparation for the fitness gram for each day missed.  
Please check off each task when completed.

Day 1	Day 2	Day 3	Day 4	Day 5	10 Jumping Jacks
_____	_____	_____	_____	_____	10 Toe Touches
_____	_____	_____	_____	_____	5 Seated Stretches on each leg
_____	_____	_____	_____	_____	50 Sit-ups
_____	_____	_____	_____	_____	20 Push-ups
_____	_____	_____	_____	_____	Walk or run for five minutes.

Engage in at least 30 minutes of student-selected physical activity and complete the activity log.  
If you engage in 30 consecutive minutes, you only need to complete one line each day.

Day	Time	Total Minutes	Physical Activity	Family Verification
Day 1				
Day 1				
Day 1				
Day 1				
Day 2				
Day 2				
Day 2				
Day 2				
Day 3				
Day 3				
Day 3				
Day 3				
Day 4				
Day 4				
Day 4				
Day 4				
Day 5				
Day 5				
Day 5				
Day 5				