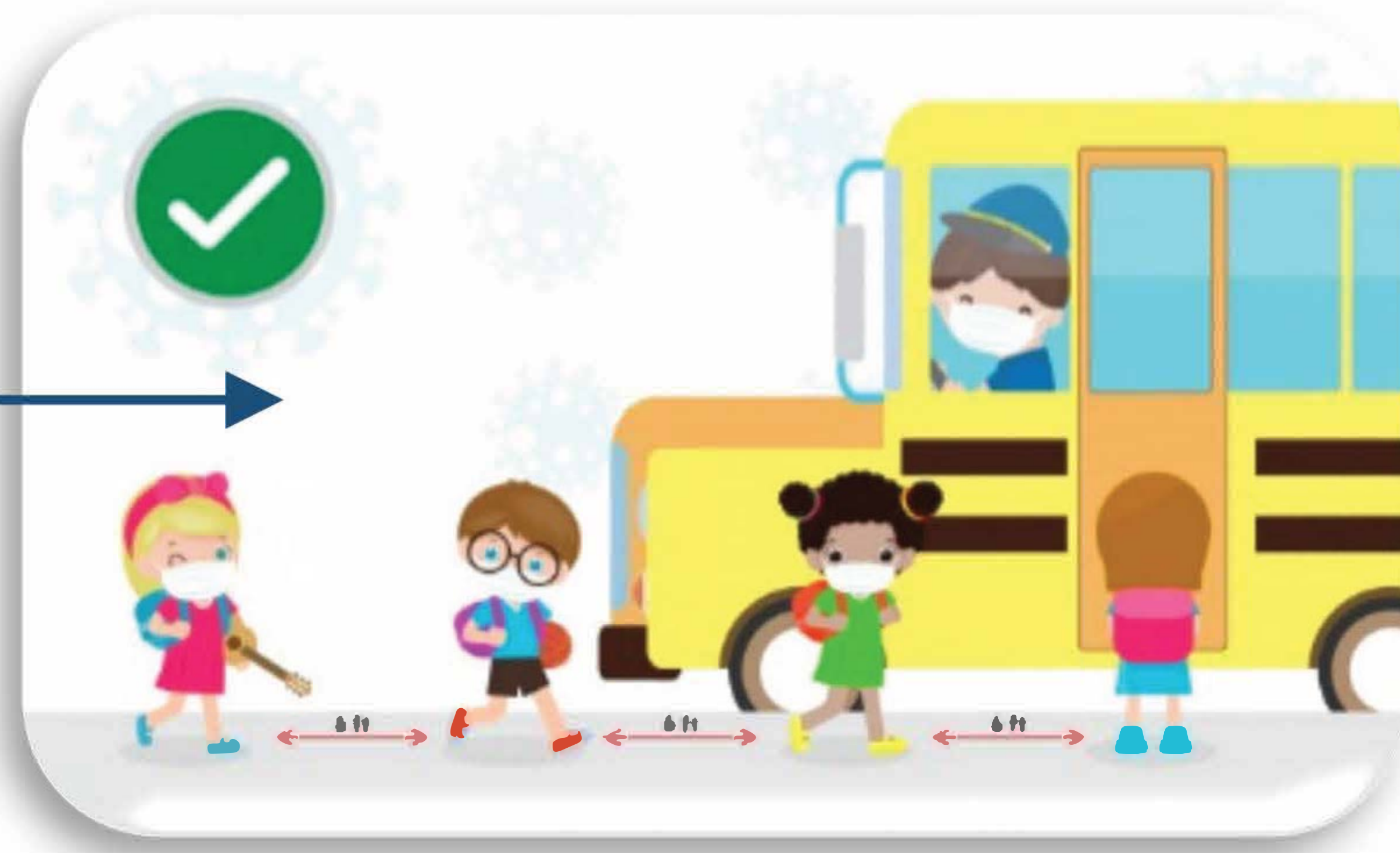


# CLAY COUNTY SCHOOLS

## Blended Model: In-Person Snapshot

### TRANSPORTATION

Assigned seating with two students per seat and social distancing when boarding or exiting buses. Families may be seated together. Students will be required to wear face coverings on buses. Drivers will be required to wear face coverings when students are boarding or exiting



### ADDITIONAL PRECAUTIONS

Limit non-essential visitors, field trips, and large gatherings and/or assemblies



### WINDOWS & OUTDOOR SPACES

Utilize for fresh air and learning where applicable

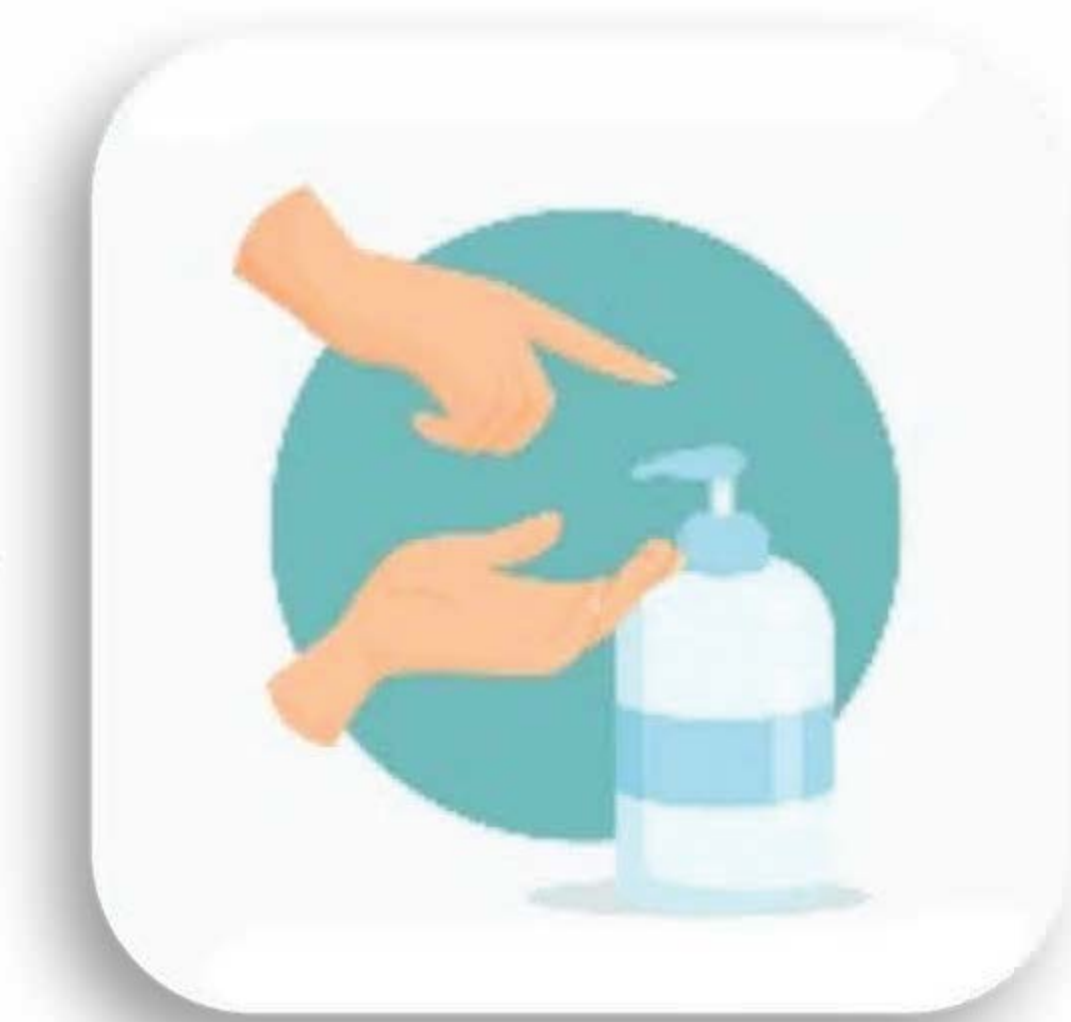


### MULTIPLE ENTRY POINTS

To promote social distancing

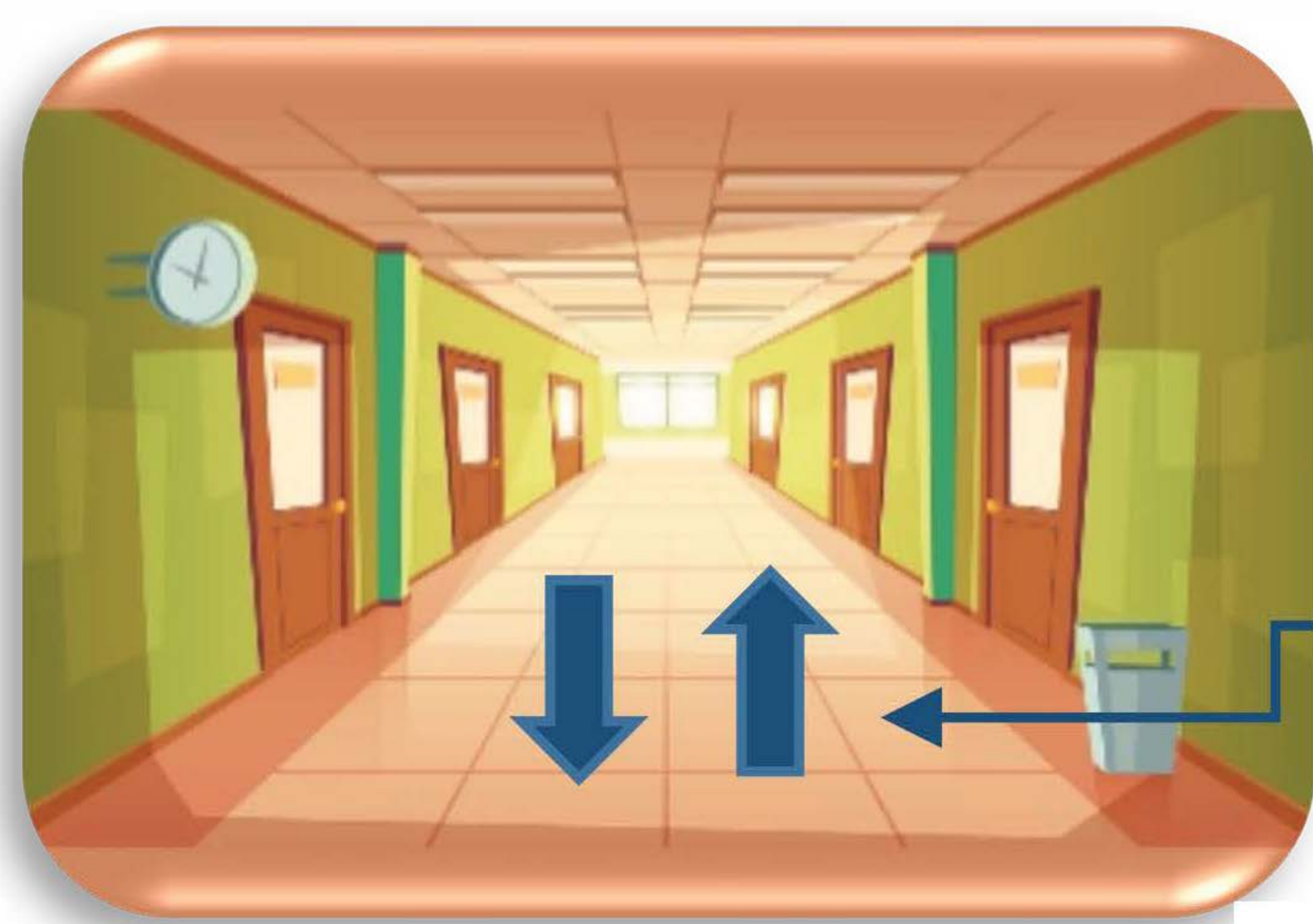
### HAND SANITIZING STATIONS

Availability throughout buildings



### PERSONAL SPACE DESK DIVIDERS

Utilize for elementary students for better social distancing



### TRAFFIC PATTERNS AND SPACING

Maintain social distancing

### HAND WASHING

Teach appropriate techniques and promote frequent hand washing



### CARE ROOM

Available for individuals displaying symptoms



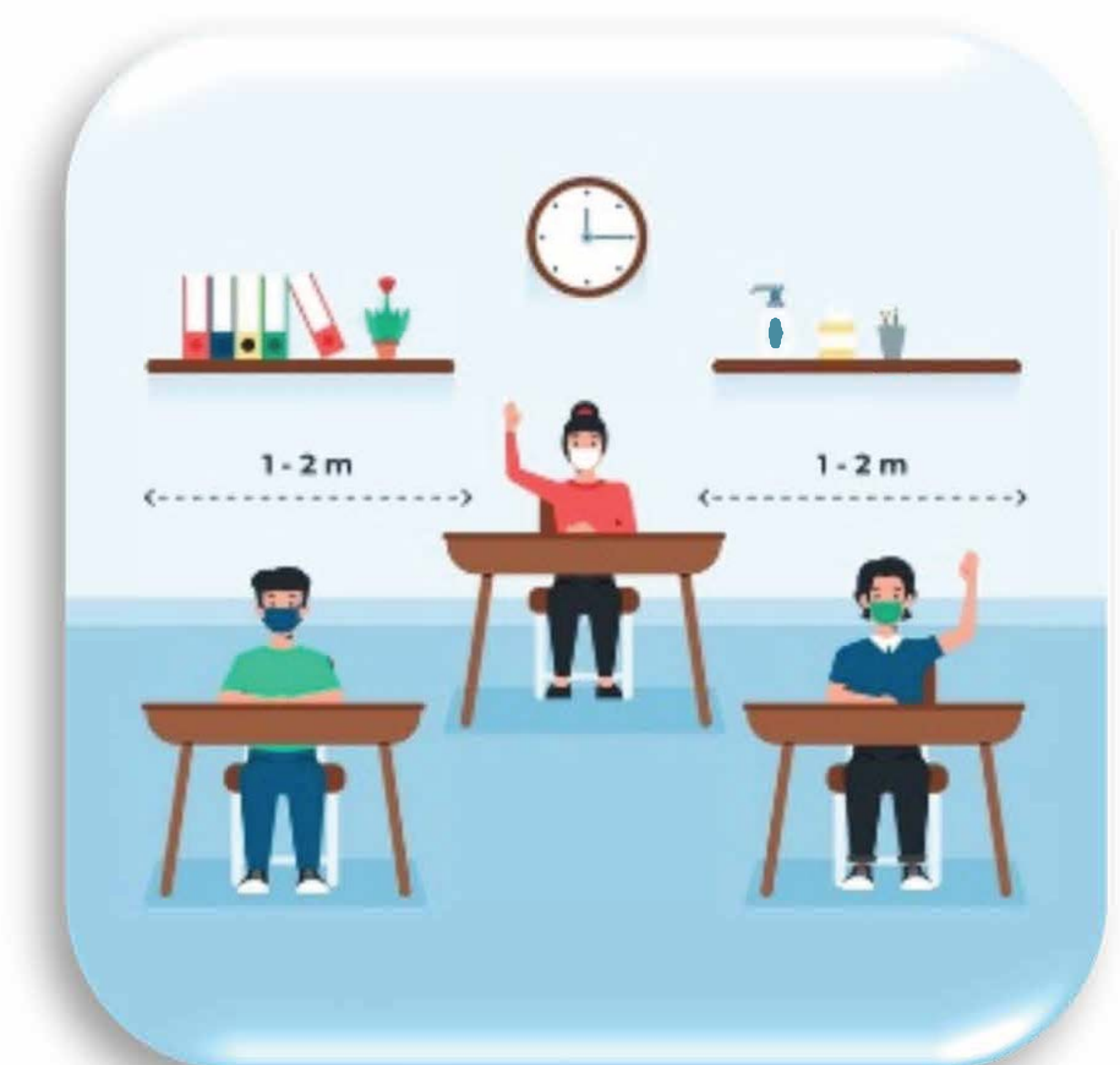
### WATER BOTTLE FILLING STATIONS

Replacing traditional water fountains to reduce the spread



### SOCIAL DISTANCING

In various areas outside of Core Groups such as hallways, cafeterias, playgrounds, gym, lockers, library, restrooms, etc. Students will have assigned seating, limited shared materials, and supplies



### FACE COVERINGS

Requirements are based on WVDE/WVDHHR guidance

